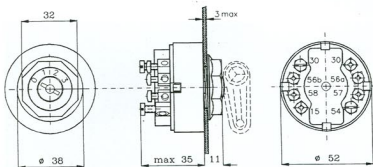
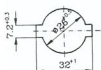


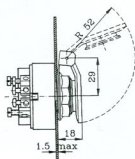
KONTAKT BRAVA TROPOLNA (sistem Bosch)



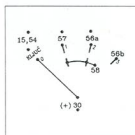
OTVOR ZA UGRADNJU



S POKLOPCEM



SHEMA SPAJANJA



- 30 = (+) AKUMULATOR
- 15 = PREKIDAČ STARTERA, DNEVNI POTROŠAČI (sirena, brisači, pokazivači pravca, ventilator)
- 54 = STOP SVJETLA
- 57 = SVJETLO ZA PARKIRANJE
- 66a = OBORENO SVJETLO
- 56b = DUGO SVJETLO
- 58 = POZICIJA, SVJETLA TABLICE, INSTRUMENT PLOČA

TEHNIČKE KARAKTERISTIKE:

RADNA TEMPERATURA	(°C)	od -25 do +90
MAX. STRUJA	(A)	30
NAPON	(V)	12 - 24
PRIKLJUČCI		ZA ŽICU 0,5 - 4 mm ²
KONTAKTI		SREBRO - MESING
DIMENZIE	(mm)	Ø 52 x 46
TEŽINA	(g)	
	- bez poklopca	80
	- s poklopcem	97